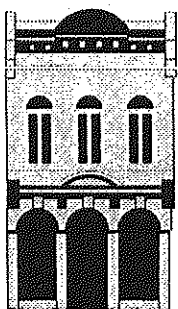


During an accidental release
of toxic chemicals . . .

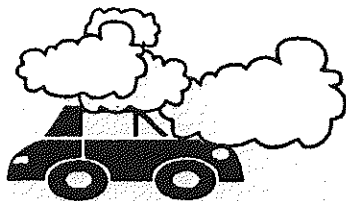
Do . . .



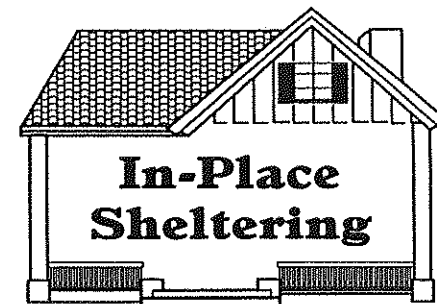
stay inside your
place of business,
home or In another
enclosed building.

Stay tuned to the Emergency
Alert Station on your
radio or television for further
information and guidance. In the
Wilmington area the EAS
station is WMNX (97.3)

Do Not . . .



go outside or attempt
to drive.



Emergency Planning Committee Participants

- New Hanover County Departments (5)
- General Electric
- Global Nuclear Fuels
- Corning
- Wilmington Fire & Police Department
- KOSA
- Occidental Chemical
- Takeda Vitamin & Food USA, Inc.
- UNC-W Safety Department
- U.S. Coast Guard Marine Safety Office
- New Hanover Health Network
- Koch Sulfur Products
- Eldorado Chemical
- N.C. Division of Emergency Management

What to Do . . .



What Not to Do . . .



*New Hanover County Department of
Emergency Management
and
New Hanover County Local
Emergency Planning Committee*

What . . .

During an accidental release of toxic chemicals or other emergencies where air quality is threatened, In-Place Sheltering keeps you inside a building and out of danger.

In-Place Sheltering simply means staying inside the building you are in, whether it's your home, business or other facility, or seeking shelter in the nearest available building.

In some instances, In-Place Sheltering is your best defense against accidental release of toxic chemicals. This brochure will explain the simple steps you should take in the event you are directed to seek In-Place Sheltering during an emergency.

When . . .

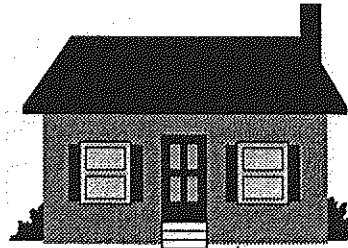
It is the responsibility of local authorities to issue orders for In-Place Sheltering during chemical emergencies. You may receive these orders directly from Police, Fire officials, Emergency Management or through a media source, such as the radio or television.

As soon as you are aware that an emergency situation exists in your area, immediately turn on your television or radio for further information. (Local Emergency Alert Station is WMNX 97.3) Local officials will relay emergency action steps to the media on a continual basis until the crisis is over.

Once the order for In-Place Sheltering has been issued, do not leave your home until you receive official notification that the danger has passed. Again, this information will be released to the media, and you may also receive this information directly from the Police or Fire Department.

Where and How . . .

In Your Home



Close and lock all the doors and windows to the outside. (Windows often seal better when locked.)

Bring outdoor pets inside.

Turn off all heating systems.

Turn off all air conditioners and switch inlets to the "closed" position. Seal any gaps around window-type air conditioners with tape and plastic sheeting, wax paper, aluminum wrap or any other suitable material.

Turn off all exhaust fans in kitchens, bathrooms and any other spaces.

Close all fireplace dampers and seal all openings with tape and plastic sheeting, wax paper, aluminum wrap or other suitable material.

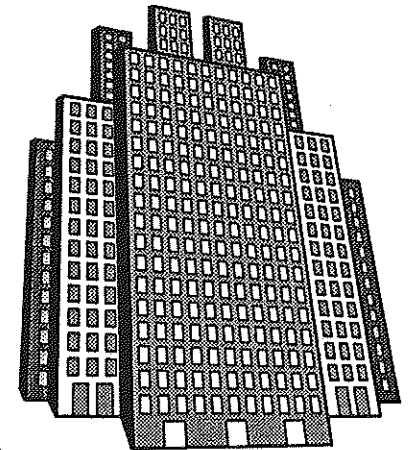
Close as many internal doors as possible in your home or building.

Use tape and plastic food wrapping, wax paper or aluminum wrap to cover and seal bathroom exhaust and grilles, range vents, dryer vents, and other openings to the outdoors to the extent possible. Make sure you seal any obvious gaps around external windows and doors.

Close the drapes, curtains or shades over windows to protect yourself against any possible explosion from the outside. Stay away from external windows to prevent possible injury from flying glass.

If the vapors begin to bother you, hold a wet cloth or handkerchief over your nose and mouth. For higher degrees of protection, go into the bathroom, close the door and turn on the shower in a strong spray to "wash" the air. Seal any opening to the outside of the bathroom as best you can. Do not worry about running out of air to breathe, as this is very unlikely in normal homes and buildings.

In Your Workplace



In addition to the directions listed In-Your Home, you should . . .

Ensure that all ventilation systems are set to 100 percent recirculation so that no outside air is drawn into the structure. Where this is not possible, ventilation systems should be turned off.

Minimize the use of elevators. Elevators tend to "pump" outdoor air in and out of a building as they travel up and down.